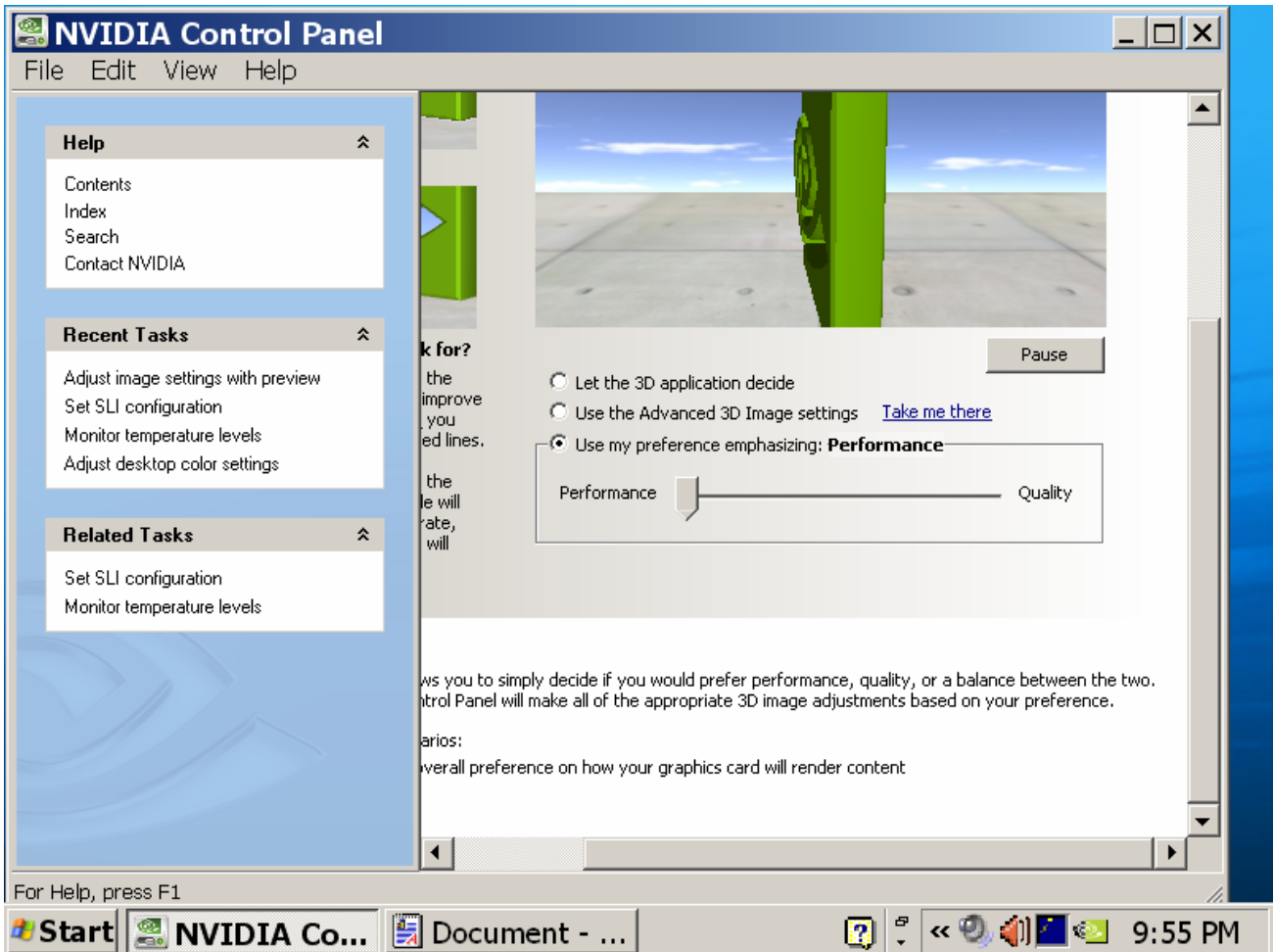


NVIDIA SETTINGS





NVIDIA Control Panel File Edit View Profiles Display Help

Adjust Desktop Color Settings











Control Panel Categories > Display [Restore Defaults](#)

With this page you can adjust your color settings.

1. Select the display you would like to change.

 TV  DEC Analog Display

2. Apply the following color settings to the selected display.

	Brightness:	-		+ 51%
	Digital Vibrance:	-		+ 3%
	Contrast:	-		+ 29%
	Image sharpening:	-		+ 42%
	Gamma:	-		+ 4%

For Help, press F1

Start Settings NVIDIA Co... 10:01 PM


NVIDIA Control Panel File Edit View Profiles Display Help

Change Resolution Attributes


Control Panel Categories » Display Restore Defaults

You can change the color setting, reduce flickering, or adjust the amount of information a

1. Select the display you would like to change.



TV



DEC Analog Display

2. Choose the display settings for the selected display.

Display resolution

Less ▼ More

800 by 600 pixels

Color quality

Less ▼ More

Highest (32-bit color)

Refresh rate

60 Hertz

For Help, press F1

Start NVIDIA Co... 10:03 PM

NVIDIA Control Panel File Edit View Help

Adjust Video Color Settings

Control Panel Categories » Video & Television [Restore Defaults](#)

Adjusting the video color settings will allow you to fine tune the color settings for video content while you make adjustments to view the changes as they happen.

TV **DEC Analog Display**

Apply the following settings to my video content...

Brightness	-		+ 58%
Contrast	-		+ 27%
Hue	-		+ 51%
Saturation	-		+ 42%
Gamma	-		+ 0%

For Help, press F1

Start | NVIDIA Co... | 10:05 PM


NVIDIA Control Panel File Edit View Help

Adjust Television Color Settings

Control Panel Categories » Video & Television [Restore Defaults](#)









You can adjust your television picture quality for the best possible viewing in its environment.

1. Select the display you would like to change.



TV

2. Apply the following settings to my television.

	Brightness:	-		+	102%
	Contrast:	-		+	74%
	Saturation:	-		+	197%
	Flicker filter:	-		+	127%

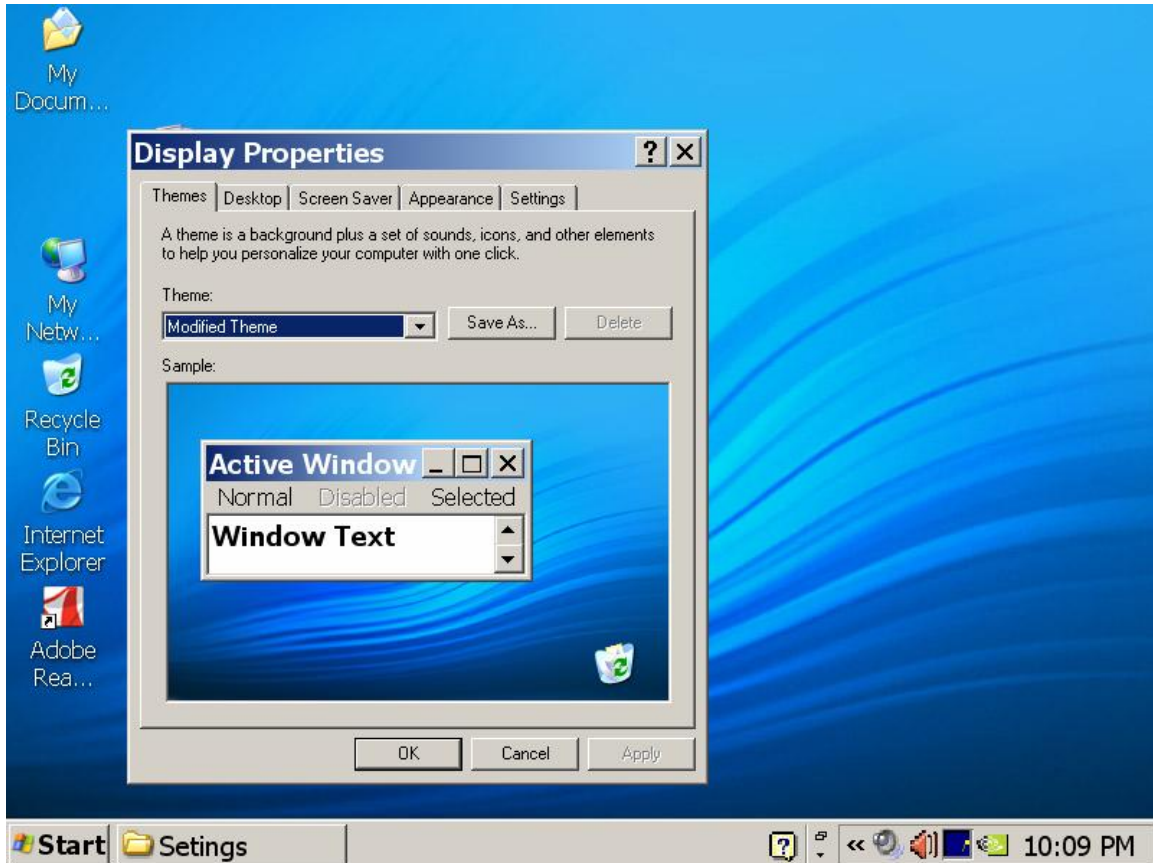
Description:

For Help, press F1

Start | NVIDIA Co... | Document - ... | 10:06 PM

WINDOWS SETTINGS

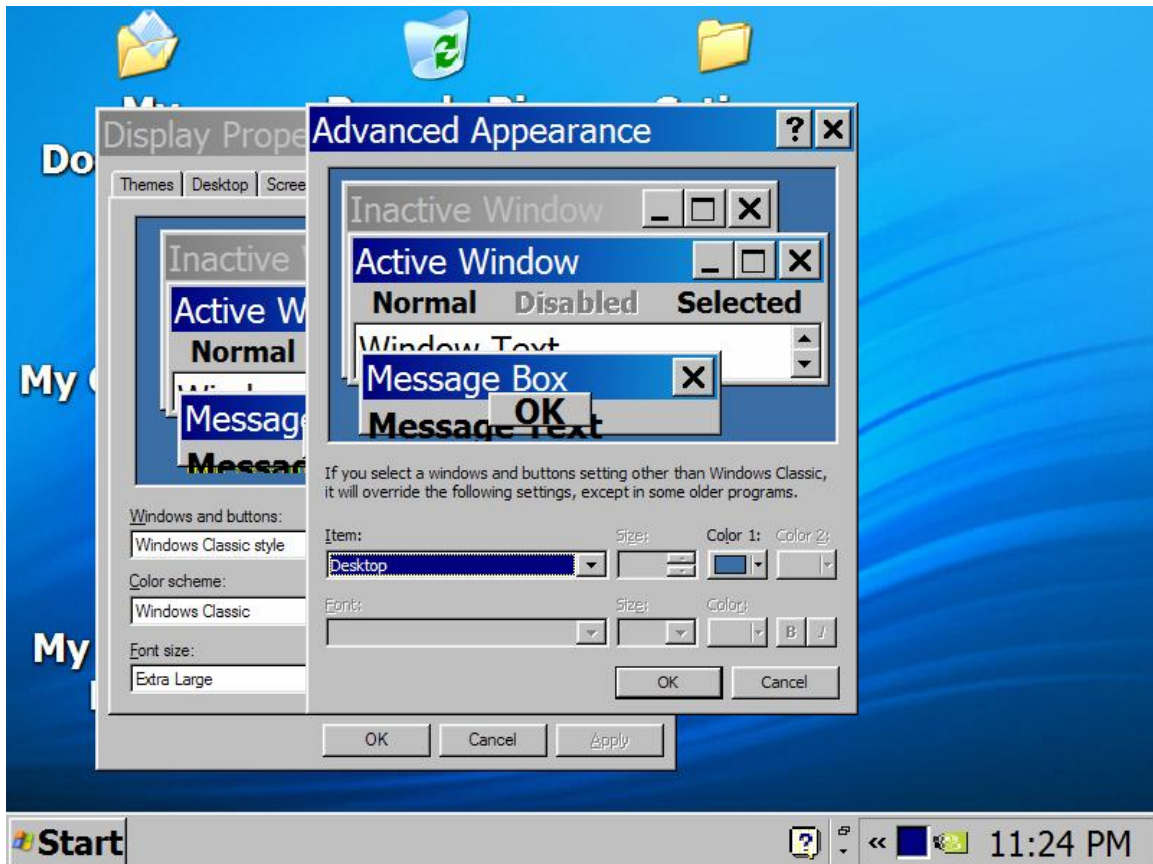
* Right Click on Desktop and select Properties then click on Themes:



* Right Click on Desktop and select Properties then click on Appearance:



* Right Click on Desktop and select Properties then click on Appearance -> Click on Advance Button:



In Advance Appearance window we need to change the Item Properties.

1. Click on Item Dropdown list and select **Icon** then
Set **Item** size=50, **Font**-Tahoma, size=20, Font Bold.
2. Click on Item Dropdown list and select **Icon Spacing (Horizontal)** then
Set **Item** size=150.
3. Click on Item Dropdown list and select **Icon Spacing (Vertical)** then
Set **Item** size=90.
4. Click on Item Dropdown list and select **Menu** then
Set **Item** size=35, **Font**-Tahoma, size=15, Color=Black.
5. Click on Item Dropdown list and select **Message Box** then
Set **Font**-Tahoma, size=15,Color=Black.
6. Click on Item Dropdown list and select **Selected Item** then
Set **Item** size=18 Item Color=Blue, **Font**-Tahoma, size=20.

* Right Click on Desktop and select Properties then click on Appearance -> Click on Effect Button:

